

I. Drug Analysis



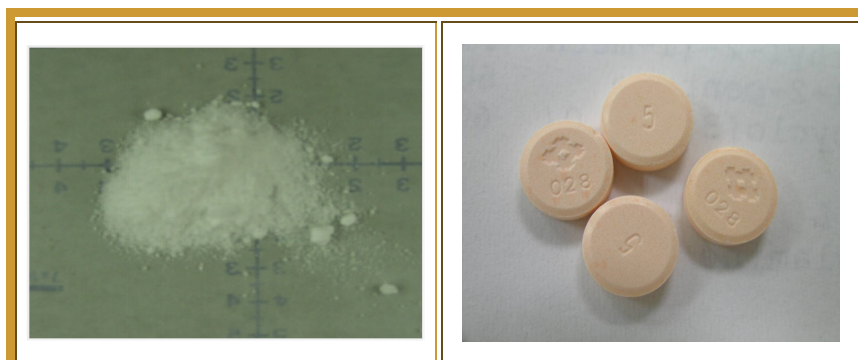
Heroin

Marijuana



Methamphetamine

MDMA



Ketamine

Nimetazepam

Gas chromatograph/mass spectrometers (GC/MSs) are the most important instruments for drug analysis because most of drugs can be analyzed by GC/MSs. There are fourteen GC/MSs with different inlet systems in this laboratory.

The robot system is widely used for the pretreatment of quantitative analysis in this laboratory. The stock solution prepared by the robot system contains samples and internal standard components which can be directly sent into GC/MSs for further quantitative analysis of drug seizures.



Robot system



**Gas chromatograph/
mass spectrometer**

The GC/MS is not suitable for the analysis of thermal unstable and undissolved samples. The high performance liquid chromatograph/mass spectrometer (LC/MS) can be used for qualitative and quantitative analysis of the thermal unstable and undissolved samples such as psilocybine, modafinil, etc.

There are three LC/MSs with different kinds of mass analyzers including triple quadruple, time-of-flight and ion trap for different analytical purposes in this laboratory.



HPLC/Ion-Trap MS



HPLC/TOF MS